

Malik Commutator Works



Commutators

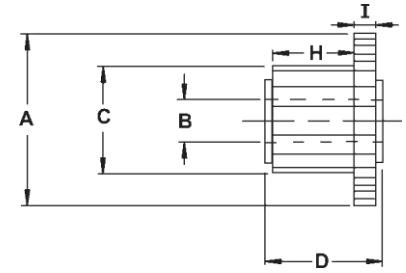
Catalog

2024-2025



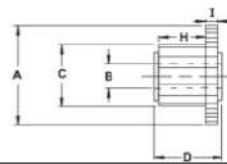
www.MalikCompany.Com

Commutator Details



Armature O.E. No.	Armature Cargo No.	Commutator Bars No.	A	B	C	D	H	I	
BOSCH									
1004001033	132815	B134602	23	52,41	12,90	32,97	35,21	22,04	5,36
1004002119	132155	B134568	33	51,09	15,10	36,16	27,80	22,37	4,97
1004002122	132155	B134568	33	51,09	15,10	36,16	27,80	22,37	4,97
1004002124	132155	B134568	33	51,09	15,10	36,16	27,80	22,37	4,97
1004002127	133154	B134568	33	51,09	15,10	36,16	27,80	22,37	4,97
1004002129	132155	B134568	33	51,09	15,10	36,16	27,80	22,37	4,97
1004002131	132155	B134568	33	51,09	15,10	36,16	27,80	22,37	4,97
1004003122	137786	B134570	27	56,51	15,19	35,52	30,28	21,06	5,89
1004003124	134628	B134570	27	56,51	15,19	35,52	30,28	21,06	5,89
1004003125	130059	B134568	33	51,09	15,10	36,16	27,80	22,37	4,97
1004003127	130059	B134568	33	51,09	15,10	36,16	27,80	22,37	4,97
1004003130	131663	B134570	27	56,51	15,19	35,52	30,28	21,06	5,89
1004003132	132156	B134570	27	56,51	15,19	35,52	30,28	21,06	5,89
1004003133	131663	B134570	27	56,51	15,19	35,52	30,28	21,06	5,89
1004003134	130060	B134568	33	51,09	15,10	36,16	27,80	22,37	4,97
1004003138	131663	B134570	27	56,51	15,19	35,52	30,28	21,06	5,89
1004003139	132156	B134570	27	56,51	15,19	35,52	30,28	21,06	5,89
1004003140	131050	B134570	27	56,51	15,19	35,52	30,28	21,06	5,89
1004003142	131663	B134570	27	56,51	15,19	35,52	30,28	21,06	5,89
1004003143	130060	B134568	33	51,09	15,10	36,16	27,80	22,37	4,97
1004003148	132149	B134570	27	56,51	15,19	35,52	30,28	21,06	5,89
1004003152	132164	B134571	23	57,27	14,74	35,52	30,28	20,81	6,37
1004003153	134521	B134571	23	57,27	14,74	35,52	30,28	20,81	6,37
1004003900	130059	B134568	33	51,09	15,10	36,16	27,80	22,37	4,97
1004003901	130060	B134568	33	51,09	15,10	36,16	27,80	22,37	4,97
1004003907	131839	B134571	23	57,27	14,74	35,52	30,28	20,81	6,37
1004003909	132164	B134571	23	57,27	14,74	35,52	30,28	20,81	6,37
1004003910	134521	B134571	23	57,27	14,74	35,52	30,28	20,81	6,37
1004003912	131663	B134570	27	56,51	15,19	35,52	30,28	21,06	5,89
1004003913	132156	B134570	27	56,51	15,19	35,52	30,28	21,06	5,89
1004003914	131050	B134570	27	56,51	15,19	35,52	30,28	21,06	5,89
1004003915	132149	B134570	27	56,51	15,19	35,52	30,28	21,06	5,89
1004003919	134799	B134570	27	56,51	15,19	35,52	30,28	21,06	5,89
1004011003	131051	B134581	19	42,18	15,23	34,05	28,28	18,76	5,49
1004011004	132152	B134581	19	42,18	15,23	34,05	28,28	18,76	5,49
1004011018	136783	B139778	28	46,08	15,56	35,57	23,05	16,39	4,63
1004011020	132816	B134601	28	53,00	12,98	33,09	32,38	19,20	4,55
1004011022	132814	B134602	23	52,41	12,90	32,97	35,21	22,04	5,36
1004011023	132816	B134601	28	53,00	12,98	33,09	32,38	19,20	4,55
1004011024	132816	B134601	28	53,00	12,98	33,09	32,38	19,20	4,55
1004011025	132814	B134602	23	52,41	12,90	32,97	35,21	22,04	5,36
1004011026	132816	B134601	28	53,00	12,98	33,09	32,38	19,20	4,55
1004011030	132815	B134602	23	52,41	12,90	32,97	35,21	22,04	5,36
1004011031	132814	B134602	23	52,41	12,90	32,97	35,21	22,04	5,36
1004011032	132816	B134601	28	53,00	12,98	33,09	32,38	19,20	4,55
1004011033	132815	B134602	23	52,41	12,90	32,97	35,21	22,04	5,36
1004011034	132816	B134601	28	53,00	12,98	33,09	32,38	19,20	4,55
1004011036	132814	B134602	23	52,41	12,90	32,97	35,21	22,04	5,36
1004011037	132815	B134602	23	52,41	12,90	32,97	35,21	22,04	5,36
1004011039	134514	B137336	28	43,01	12,79	33,12	25,81	16,95	4,93
1004011041	136231	B134602	23	52,41	12,90	32,97	35,21	22,04	5,36
1004011042	134514	B137336	28	43,01	12,79	33,12	25,81	16,95	4,93
1004011043	137070	B134601	28	53,00	12,98	33,09	32,38	19,20	4,55
1004011044	132814	B134602	23	52,41	12,90	32,97	35,21	22,04	5,36

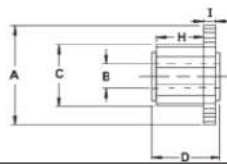
O.E.M. names and numbers are used for reference purposes only. O.E (Original Equipment)



Commutator Details

Armature O.D.	Armature No.	Armature Cargo No.	Commutator Bars No.	A	B	C	D	H	I	
BOSCH continued										
1004011045	136231		B134602	23	52,41	12,90	32,97	35,21	22,04	5,36
1004011047	132814		B134602	23	52,41	12,90	32,97	35,21	22,04	5,36
1004011048	132815		B134602	23	52,41	12,90	32,97	35,21	22,04	5,36
1004011051	132816		B134601	28	53,00	12,98	33,09	32,38	19,20	4,55
1004011053	132814		B134602	23	52,41	12,90	32,97	35,21	22,04	5,36
1004011055	136231		B134602	23	52,41	12,90	32,97	35,21	22,04	5,36
1004011056	132814		B134602	23	52,41	12,90	32,97	35,21	22,04	5,36
1004011057	137070		B134601	28	53,00	12,98	33,09	32,38	19,20	4,55
1004011059	132814		B134602	23	52,41	12,90	32,97	35,21	22,04	5,36
1004011062	134514		B137336	28	43,01	12,79	33,12	25,81	16,95	4,93
1004011065	132816		B134601	28	53,00	12,98	33,09	32,38	19,20	4,55
1004011066	132814		B134602	23	52,41	12,90	32,97	35,21	22,04	5,36
1004011067	230518		B134602	23	52,41	12,90	32,97	35,21	22,04	5,36
1004011068	134514		B137336	28	43,01	12,79	33,12	25,81	16,95	4,93
1004011070	132816		B134601	28	53,00	12,98	33,09	32,38	19,20	4,55
1004011071	137070		B134601	28	53,00	12,98	33,09	32,38	19,20	4,55
1004011072	137893		B134602	23	52,41	12,90	32,97	35,21	22,04	5,36
1004011073	234022		B234460	23	44,50	13,00	32,20	34,10	22,86	4,70
1004011074	137284		B134602	23	52,41	12,90	32,97	35,21	22,04	5,36
1004011076	137070		B134601	28	53,00	12,98	33,09	32,38	19,20	4,55
1004011077	132816		B134601	28	53,00	12,98	33,09	32,38	19,20	4,55
1004011080	139404		B134602	23	52,41	12,90	32,97	35,21	22,04	5,36
1004011082	139703		B234460	23	44,50	13,00	32,20	34,10	22,86	4,70
1004011083	139658		B137336	28	43,01	12,79	33,12	25,81	16,95	4,93
1004011084	233715		B234460	23	44,50	13,00	32,20	34,10	22,86	4,70
1004011085	132816		B134601	28	53,00	12,98	33,09	32,38	19,20	4,55
1004011086	134514		B137336	28	43,01	12,79	33,12	25,81	16,95	4,93
1004011087	137284		B134602	23	52,41	12,90	32,97	35,21	22,04	5,36
1004011088	137893		B134602	23	52,41	12,90	32,97	35,21	22,04	5,36
1004011089	231065		B137336	28	43,01	12,79	33,12	25,81	16,95	4,93
1004011090	139704		B134602	23	52,41	12,90	32,97	35,21	22,04	5,36
1004011091	137070		B134601	28	53,00	12,98	33,09	32,38	19,20	4,55
1004011092	234022		B234460	23	44,50	13,00	32,20	34,10	22,86	4,70
1004011096	139658		B137336	28	43,01	12,79	33,12	25,81	16,95	4,93
1004011098	132814		B134602	23	52,41	12,90	32,97	35,21	22,04	5,36
1004011099	136231		B134602	23	52,41	12,90	32,97	35,21	22,04	5,36
1004011101	132988		B139778	28	46,08	15,56	35,57	23,05	16,39	4,63
1004011107	135114		B134600	25	43,04	14,78	33,98	24,41	16,90	5,06
1004011111	132988		B139778	28	46,08	15,56	35,57	23,05	16,39	4,63
1004011118	136783		B139778	28	46,08	15,56	35,57	23,05	16,39	4,63
1004011120	132988		B139778	28	46,08	15,56	35,57	23,05	16,39	4,63
1004011123	136988		B139778	28	46,08	15,56	35,57	23,05	16,39	4,63
1004011124	136783		B139778	28	46,08	15,56	35,57	23,05	16,39	4,63
1004011127	135114		B134600	25	43,04	14,78	33,98	24,41	16,90	5,06
1004011128	137264		B139778	28	46,08	15,56	35,57	23,05	16,39	4,63
1004011136	132988		B139778	28	46,08	15,56	35,57	23,05	16,39	4,63
1004011141			B234459	28	45,85	15,80	35,10	20,00	13,81	4,96
1004011201	132814		B134602	23	52,41	12,90	32,97	35,21	22,04	5,36
1004011202	139404		B134602	23	52,41	12,90	32,97	35,21	22,04	5,36
1004011203	132816		B134601	28	53,00	12,98	33,09	32,38	19,20	4,55
1004011205	139404		B134602	23	52,41	12,90	32,97	35,21	22,04	5,36
1004011207	230518		B134602	23	52,41	12,90	32,97	35,21	22,04	5,36
1004011208	230371		B134602	23	52,41	12,90	32,97	35,21	22,04	5,36
1004011211	234166		B134602	23	52,41	12,90	32,97	35,21	22,04	5,36
1004011901	132814		B134602	23	52,41	12,90	32,97	35,21	22,04	5,36
1004011902	136231		B134602	23	52,41	12,90	32,97	35,21	22,04	5,36
1004012011	130122		B134569	23	44,51	15,98	36,08	23,55	16,58	5,55
1004012404	130062		B134569	23	44,51	15,98	36,08	23,55	16,58	5,55
1004012406	130061		B134569	23	44,51	15,98	36,08	23,55	16,58	5,55
1004012407	130062		B134569	23	44,51	15,98	36,08	23,55	16,58	5,55
1004012408	131063		B134572	19	47,20	15,64	36,10	23,46	14,85	6,59
1004012409	134522		B134569	23	44,51	15,98	36,08	23,55	16,58	5,55
1004012410	133160		B134569	23	44,51	15,98	36,08	23,55	16,58	5,55
1004012411	132162		B134572	19	47,20	15,64	36,10	23,46	14,85	6,59
1004012412	130994		B134569	23	44,51	15,98	36,08	23,55	16,58	5,55
1004012413	130122		B134569	23	44,51	15,98	36,08	23,55	16,58	5,55
1004012415	132325		B134572	19	47,20	15,64	36,10	23,46	14,85	6,59

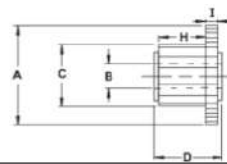
O.E.M. names and numbers are used for reference purposes only. O.E (Original Equipment)



Commutator Details

Armature O.E. No.	Armature Cargo No.	Commutator Bars No.	A	B	C	D	H	I	
1004012417	130062	B134569	23	44,51	15,98	36,08	23,55	16,58	5,55
1004012418	134523	B134569	23	44,51	15,98	36,08	23,55	16,58	5,55
1004012420	132143	B134569	23	44,51	15,98	36,08	23,55	16,58	5,55
1004012421	132153	B134572	19	47,20	15,64	36,10	23,46	14,85	6,59
1004012422	132153	B134572	19	47,20	15,64	36,10	23,46	14,85	6,59
1004012426	132143	B134569	23	44,51	15,98	36,08	23,55	16,58	5,55
1004012427	134436	B134572	19	47,20	15,64	36,10	23,46	14,85	6,59
1004012428	130122	B134569	23	44,51	15,98	36,08	23,55	16,58	5,55
1004012429	132325	B134572	19	47,20	15,64	36,10	23,46	14,85	6,59
1004012431	131063	B134572	19	47,20	15,64	36,10	23,46	14,85	6,59
1004012432	132153	B134572	19	47,20	15,64	36,10	23,46	14,85	6,59
1004012433	133209	B134572	19	47,20	15,64	36,10	23,46	14,85	6,59
1004012434	136123	B134572	19	47,20	15,64	36,10	23,46	14,85	6,59
1004012449	130122	B134569	23	44,51	15,98	36,08	23,55	16,58	5,55
1004012450	132031	B134579	13	45,58	10,03	31,14	37,49	22,26	5,04
1004012452	130062	B134569	23	44,51	15,98	36,08	23,55	16,58	5,55
1004012468	134522	B134569	23	44,51	15,98	36,08	23,55	16,58	5,55
1004012901	133160	B134569	23	44,51	15,98	36,08	23,55	16,58	5,55
1004012902	136123	B134572	19	47,20	15,64	36,10	23,46	14,85	6,59
1004012903	132143	B134569	23	44,51	15,98	36,08	23,55	16,58	5,55
1004012904	134436	B134572	19	47,20	15,64	36,10	23,46	14,85	6,59
1004012905	132153	B134572	19	47,20	15,64	36,10	23,46	14,85	6,59
1004012906	131063	B134572	19	47,20	15,64	36,10	23,46	14,85	6,59
1004012907	132325	B134572	19	47,20	15,64	36,10	23,46	14,85	6,59
1004012909	133209	B134572	19	47,20	15,64	36,10	23,46	14,85	6,59
1004012910	132325	B134572	19	47,20	15,64	36,10	23,46	14,85	6,59
1004012911	132162	B134572	19	47,20	15,64	36,10	23,46	14,85	6,59
1004012912	132143	B134569	23	44,51	15,98	36,08	23,55	16,58	5,55
1004012913	130122	B134569	23	44,51	15,98	36,08	23,55	16,58	5,55
1004012914	130122	B134569	23	44,51	15,98	36,08	23,55	16,58	5,55
1004012915	130122	B134569	23	44,51	15,98	36,08	23,55	16,58	5,55
1004012916	130994	B134569	23	44,51	15,98	36,08	23,55	16,58	5,55
1004012917	130062	B134569	23	44,51	15,98	36,08	23,55	16,58	5,55
1004012919	134523	B134569	23	44,51	15,98	36,08	23,55	16,58	5,55
1004012920	130061	B134569	23	44,51	15,98	36,08	23,55	16,58	5,55
1004014104	130062	B134569	23	44,51	15,98	36,08	23,55	16,58	5,55
1004112411	132162	B134572	19	47,20	15,64	36,10	23,46	14,85	6,59
1007010018	132325	B134572	19	47,20	15,64	36,10	23,46	14,85	6,59
1007010021	131063	B134572	19	47,20	15,64	36,10	23,46	14,85	6,59
2004002011	232626	B134571	23	57,27	14,74	35,52	30,28	20,81	6,37
2004002031	130108	B134568	33	51,09	15,10	36,16	27,80	22,37	4,97
2004002032	133107	B134568	33	51,09	15,10	36,16	27,80	22,37	4,97
2004002036	130108	B134568	33	51,09	15,10	36,16	27,80	22,37	4,97
2004003031	134799	B134570	27	56,51	15,19	35,52	30,28	21,06	5,89
2004003036	134799	B134570	27	56,51	15,19	35,52	30,28	21,06	5,89
2004004003	131075	B134580	21	68,01	17,47	46,13	41,06	29,32	5,85
2004004005	131075	B134580	21	68,01	17,47	46,13	41,06	29,32	5,85
2004004006	131075	B134580	21	68,01	17,47	46,13	41,06	29,32	5,85
2004004007	131075	B134580	21	68,01	17,47	46,13	41,06	29,32	5,85
2004004010	131075	B134580	21	68,01	17,47	46,13	41,06	29,32	5,85
2004004024	130118	B139661	21	66,23	16,07	43,16	36,45	27,23	5,02
2004004025	130118	B139661	21	66,23	16,07	43,16	36,45	27,23	5,02
2004004031	130108	B134568	33	51,09	15,10	36,16	27,80	22,37	4,97
2004004032	131309	B134573	33	65,52	19,05	46,11	43,62	30,22	6,93
2004004033	131309	B134573	33	65,52	19,05	46,11	43,62	30,22	6,93
2004004034	231493	B232976	29	66,20	18,75	45,00	44,70	30,00	10,10
2004004035	131309	B134573	33	65,52	19,05	46,11	43,62	30,22	6,93
2004004036	131309	B134573	33	65,52	19,05	46,11	43,62	30,22	6,93
2004004037	135351	B134573	33	65,52	19,05	46,11	43,62	30,22	6,93
2004004038	131309	B134573	33	65,52	19,05	46,11	43,62	30,22	6,93
2004004040	135351	B134573	33	65,52	19,05	46,11	43,62	30,22	6,93
2004004056	135351	B134573	33	65,52	19,05	46,11	43,62	30,22	6,93
2004004061	130319	B134573	33	65,52	19,05	46,11	43,62	30,22	6,93
2004004062	130119	B134573	33	65,52	19,05	46,11	43,62	30,22	6,93
2004004067	131124	B134573	33	65,52	19,05	46,11	43,62	30,22	6,93
2004004069	131665	B134573	33	65,52	19,05	46,11	43,62	30,22	6,93
2004004071	130113	B137407	21	63,18	15,79	43,07	33,07	23,02	6,62
2004004072	130114	B137407	21	63,18	15,79	43,07	33,07	23,02	6,62

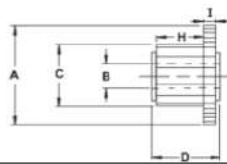
O.E.M. names and numbers are used for reference purposes only. O.E (Original Equipment)



Commutator Details

Armature O.E. No.	Armature Cargo No.	Commutator Bars No.	A	B	C	D	H	I
BOSCH continued								
2004004074	130115	B134574	21	62,96	15,96	42,76	35,72	22,47
-	-	B134575	21	68,06	19,03	45,98	34,98	21,92
2004004075	130116	B134574	21	62,96	15,96	42,76	35,72	22,47
-	-	B134575	21	68,06	19,03	45,98	34,98	21,92
2004004076	130117	B134574	21	62,96	15,96	42,76	35,72	22,47
-	-	B134575	21	68,06	19,03	45,98	34,98	21,92
2004004081	130118	B139661	21	66,23	16,07	43,16	36,45	27,23
2004004083	131130	B139661	21	66,23	16,07	43,16	36,45	27,23
2004004090	136105	B134574	21	62,96	15,96	42,76	35,72	22,47
-	-	B134575	21	68,06	19,03	45,98	34,98	21,92
2004004091	130117	B134574	21	62,96	15,96	42,76	35,72	22,47
-	-	B134575	21	68,06	19,03	45,98	34,98	21,92
2004004094	130117	B134574	21	62,96	15,96	42,76	35,72	22,47
-	-	B134575	21	68,06	19,03	45,98	34,98	21,92
2004004095	130115	B134574	21	62,96	15,96	42,76	35,72	22,47
-	-	B134575	21	68,06	19,03	45,98	34,98	21,92
2004004096	130117	B134574	21	62,96	15,96	42,76	35,72	22,47
-	-	B134575	21	68,06	19,03	45,98	34,98	21,92
2004004100	136998	B139122	27	64,11	19,02	45,62	45,02	30,94
2004004105	132332	B139122	27	64,11	19,02	45,62	45,02	30,94
2004004110	131116	B139122	27	64,11	19,02	45,62	45,02	30,94
-	-	B134573	33	65,52	19,05	46,11	43,62	30,22
2004004112	130319	B134573	33	65,52	19,05	46,11	43,62	30,22
2004004114	131124	B134573	33	65,52	19,05	46,11	43,62	30,22
2004004115	131116	B139122	27	64,11	19,02	45,62	45,02	30,94
2004004116	132159	B139876	33	69,13	17,44	45,14	29,11	19,75
2004004118	131379	B233492	33	68,30	17,45	45,61	32,18	20,77
2004004128	131116	B139122	27	64,11	19,02	45,62	45,02	30,94
2004004925	136998	B139122	27	64,11	19,02	45,62	45,02	30,94
2004004926	132332	B139122	27	64,11	19,02	45,62	45,02	30,94
2004004927	131116	B139122	27	64,11	19,02	45,62	45,02	30,94
2004004928	131116	B139122	27	64,11	19,02	45,62	45,02	30,94
2004004965	135351	B134573	33	65,52	19,05	46,11	43,62	30,22
2004004968	131116	B139122	27	64,11	19,02	45,62	45,02	30,94
2004005022	130120	B134578	29	76,99	22,10	51,03	56,07	42,14
2004005023	131311	B134578	29	76,99	22,10	51,03	56,07	42,14
2004005024	131311	B134578	29	76,99	22,10	51,03	56,07	42,14
2004005025	130320	B134577	25	77,11	22,05	50,79	56,29	41,75
-	-	B134578	29	76,99	22,10	51,03	56,07	42,14
2004005026	133486	B134578	29	76,99	22,10	51,03	56,07	42,14
2004005046	130120	B134578	29	76,99	22,10	51,03	56,07	42,14
2004005071	130320	B134577	25	77,11	22,05	50,79	56,29	41,75
-	-	B134578	29	76,99	22,10	51,03	56,07	42,14
2004005151	130320	B134577	25	77,11	22,05	50,79	56,29	41,75
-	-	B134578	29	76,99	22,10	51,03	56,07	42,14
2004005153	130120	B134578	29	76,99	22,10	51,03	56,07	42,14
2004005155	133486	B134578	29	76,99	22,10	51,03	56,07	42,14
2004011032	131051	B134581	19	42,18	15,23	34,05	28,28	18,76
2004012011	130122	B134569	23	44,51	15,98	36,08	23,55	16,58
2004014028	231272	B233965	21	64,50	18,80	44,70	60,40	46,39
2004014034	231493	B232976	29	66,20	18,75	45,00	44,70	30,00
2004014060	131075	B134580	21	68,01	17,47	46,13	41,06	29,32
2004014075	131309	B134573	33	65,52	19,05	46,11	43,62	30,22
2004014928	131116	B139122	27	64,11	19,02	45,62	45,02	30,94
2004014951	130116	B134574	21	62,96	15,96	42,76	35,72	22,47
-	-	B134575	21	68,06	19,03	45,98	34,98	21,92
2004014953	130117	B134574	21	62,96	15,96	42,76	35,72	22,47
-	-	B134575	21	68,06	19,03	45,98	34,98	21,92
2004014960	131075	B134580	21	68,01	17,47	46,13	41,06	29,32
2004014961	131075	B134580	21	68,01	17,47	46,13	41,06	29,32
2004014965	135351	B134573	33	65,52	19,05	46,11	43,62	30,22
2004014972	131379	B233492	33	68,30	17,45	45,61	32,18	20,77
2004014975	131309	B134573	33	65,52	19,05	46,11	43,62	30,22
2004336099	131124	B134573	33	65,52	19,05	46,11	43,62	30,22
2005005026	133486	B134578	29	76,99	22,10	51,03	56,07	42,14
2007031001	130113	B137407	21	63,18	15,79	43,07	33,07	23,02
2007031003	130114	B137407	21	63,18	15,79	43,07	33,07	23,02

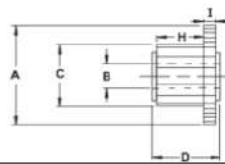
O.E.M. names and numbers are used for reference purposes only. O.E (Original Equipment)



Commutator Details

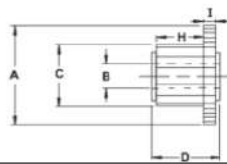
Armature O.E. No.	Armature Cargo No.	Commutator Bars No.		A	B	C	D	H	I
6033AD4013	139657	B232979	23	48,93	10,09	32,33	42,99	31,49	5,05
6033AD4080	139657	B232979	23	48,93	10,09	32,33	42,99	31,49	5,05
9001049121	131663	B134570	27	56,51	15,19	35,52	30,28	21,06	5,89
9001082304	130061	B134569	23	44,51	15,98	36,08	23,55	16,58	5,55
9001082321	130061	B134569	23	44,51	15,98	36,08	23,55	16,58	5,55
9001082574	135842	B134572	19	47,20	15,64	36,10	23,46	14,85	6,59
9001082594	135842	B134572	19	47,20	15,64	36,10	23,46	14,85	6,59
9001140182	131051	B134581	19	42,18	15,23	34,05	28,28	18,76	5,49
9001140275	130319	B134573	33	65,52	19,05	46,11	43,62	30,22	6,93
9001140339	132031	B134579	13	45,58	10,03	31,14	37,49	22,26	5,04
9001141143	131075	B134580	21	68,01	17,47	46,13	41,06	29,32	5,85
9001304001	132153	B134572	19	47,20	15,64	36,10	23,46	14,85	6,59
9001334000	131063	B134572	19	47,20	15,64	36,10	23,46	14,85	6,59
9001334001	132153	B134572	19	47,20	15,64	36,10	23,46	14,85	6,59
9001334013	132614	B134588	19	40,79	12,62	32,89	28,54	20,42	3,85
9001334020	130360	B135710	19	47,50	15,06	36,56	28,69	22,70	4,96
9001334031	131935	B134588	19	40,79	12,62	32,89	28,54	20,42	3,85
9001337081	132152	B134581	19	42,18	15,23	34,05	28,28	18,76	5,49
9001337082	131051	B134581	19	42,18	15,23	34,05	28,28	18,76	5,49
9003334020	130360	B135710	19	47,50	15,06	36,56	28,69	22,70	4,96
9003334025	132031	B134579	13	45,58	10,03	31,14	37,49	22,26	5,04
9003334026	132031	B134579	13	45,58	10,03	31,14	37,49	22,26	5,04
9003334027	137479	B134579	13	45,58	10,03	31,14	37,49	22,26	5,04
9003334029	132031	B134579	13	45,58	10,03	31,14	37,49	22,26	5,04
9003334030	137479	B134579	13	45,58	10,03	31,14	37,49	22,26	5,04
9003334031	136784	B134579	13	45,58	10,03	31,14	37,49	22,26	5,04
9003334032	136784	B134579	13	45,58	10,03	31,14	37,49	22,26	5,04
9003334036	139501	B134579	13	45,58	10,03	31,14	37,49	22,26	5,04
9003334037	137479	B134579	13	45,58	10,03	31,14	37,49	22,26	5,04
9003334039	139657	B232979	23	48,93	10,09	32,33	42,99	31,49	5,05
F000AL1521	136988	B139778	28	46,08	15,56	35,57	23,05	16,39	4,63
F010AL1014	137893	B134602	23	52,41	12,90	32,97	35,21	22,04	5,36
DELCO Eur.									
3471029	131662	B134582	31	55,06	15,23	39,43	29,58	23,77	5,88
3471131	130270	B134582	31	55,06	15,23	39,43	29,58	23,77	5,88
3471555	131122	B134582	31	55,06	15,23	39,43	29,58	23,77	5,88
3471634	133147	B134582	31	55,06	15,23	39,43	29,58	23,77	5,88
3471767	133147	B134582	31	55,06	15,23	39,43	29,58	23,77	5,88
3471796	130270	B134582	31	55,06	15,23	39,43	29,58	23,77	5,88
3471797	133147	B134582	31	55,06	15,23	39,43	29,58	23,77	5,88
DR4100	131662	B134582	31	55,06	15,23	39,43	29,58	23,77	5,88
DR4102	130270	B134582	31	55,06	15,23	39,43	29,58	23,77	5,88
DELCO US									
1846614	131627	B139879	23	60,83	15,35	43,04	33,51	25,46	4,30
1875835	131403	B139879	23	60,83	15,35	43,04	33,51	25,46	4,30
1876366	131627	B139879	23	60,83	15,35	43,04	33,51	25,46	4,30
1891916	131658	B139879	23	60,83	15,35	43,04	33,51	25,46	4,30
1893449	131403	B139879	23	60,83	15,35	43,04	33,51	25,46	4,30
1930812	131658	B139879	23	60,83	15,35	43,04	33,51	25,46	4,30
1949190	131658	B139879	23	60,83	15,35	43,04	33,51	25,46	4,30
1950417	131658	B139879	23	60,83	15,35	43,04	33,51	25,46	4,30
1956918	131658	B139879	23	60,83	15,35	43,04	33,51	25,46	4,30
1960866	131627	B139879	23	60,83	15,35	43,04	33,51	25,46	4,30
1974786	131403	B139879	23	60,83	15,35	43,04	33,51	25,46	4,30
D-4128	131403	B139879	23	60,83	15,35	43,04	33,51	25,46	4,30
DUCELLIER									
019225	134651	B134583	29	52,24	12,85	37,42	27,78	19,95	5,21
-	-	B135709	29	50,95	11,70	33,98	25,46	19,84	4,73
019256	130176	B134583	29	52,24	12,85	37,42	27,78	19,95	5,21
-	-	B135709	29	50,95	11,70	33,98	25,46	19,84	4,73
021056	130142	B134583	29	52,24	12,85	37,42	27,78	19,95	5,21
-	-	B135709	29	50,95	11,70	33,98	25,46	19,84	4,73
023276	130147	B134583	29	52,24	12,85	37,42	27,78	19,95	5,21
-	-	B135709	29	50,95	11,70	33,98	25,46	19,84	4,73

O.E.M. names and numbers are used for reference purposes only. O.E (Original Equipment)



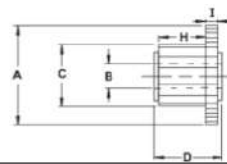
Commutator Details

Armature O.E. No.	Armature Cargo No.	Commutator Bars No.	A	B	C	D	H	I
DUCELLIER continued								
182485	133216	B134584	29	49,84	14,95	37,53	27,77	19,28
-	-	B135709	29	50,95	11,70	33,98	25,46	19,84
583009	133216	B134584	29	49,84	14,95	37,53	27,77	19,28
-	-	B135709	29	50,95	11,70	33,98	25,46	19,84
583026	133218	B134583	29	52,24	12,85	37,42	27,78	19,95
-	-	B135709	29	50,95	11,70	33,98	25,46	19,84
583081	133960	B134586	29	57,59	12,30	-	21,92	6,21
583154	133937	B134598	23	66,06	16,86	41,97	31,02	24,16
583156	132160	B134598	23	66,06	16,86	41,97	31,02	24,16
583236	133229	B134585	19	57,53	13,08	-	21,58	8,06
583249	133228	B134585	19	57,53	13,08	-	21,58	8,06
583285	133227	B134587	23	57,48	13,07	-	21,55	8,13
583295	133267	B134586	29	57,59	12,30	-	21,92	6,21
583306	133735	B134587	23	57,48	13,07	-	21,55	8,13
583312	133662	B134587	23	57,48	13,07	-	21,55	8,13
583342	133899	B134587	23	57,48	13,07	-	21,55	8,13
583344	134652	B134585	19	57,53	13,08	-	21,58	8,06
583512	133662	B134587	23	57,48	13,07	-	21,55	8,13
605999	132171	B134598	23	66,06	16,86	41,97	31,02	24,16
612117	131094	B134583	29	52,24	12,85	37,42	27,78	19,95
-	-	B135709	29	50,95	11,70	33,98	25,46	19,84
612231	130168	B134583	29	52,24	12,85	37,42	27,78	19,95
-	-	B135709	29	50,95	11,70	33,98	25,46	19,84
618206	130176	B134583	29	52,24	12,85	37,42	27,78	19,95
-	-	B135709	29	50,95	11,70	33,98	25,46	19,84
618242	132171	B134598	23	66,06	16,86	41,97	31,02	24,16
618331	130168	B134583	29	52,24	12,85	37,42	27,78	19,95
-	-	B135709	29	50,95	11,70	33,98	25,46	19,84
618493	133220	B134583	29	52,24	12,85	37,42	27,78	19,95
-	-	B135709	29	50,95	11,70	33,98	25,46	19,84
618686	133221	B134586	29	57,59	12,30	-	21,92	6,21
618687	130949	B134587	23	57,48	13,07	-	21,55	8,13
ELMOT								
8020063000	136708	B134705	19	40,81	12,10	33,44	25,01	19,64
8083006	130945	B134705	19	40,81	12,10	33,44	25,01	19,64
8183000	136708	B134705	19	40,81	12,10	33,44	25,01	19,64
FEMSA								
12517-2	132614	B134588	19	40,79	12,62	32,89	28,54	20,42
17127-1	130360	B135710	19	47,50	15,06	36,56	28,69	22,70
20582-2	131935	B134588	19	40,79	12,62	32,89	28,54	20,42
20582-5	131935	B134588	19	40,79	12,62	32,89	28,54	20,42
FIAT								
4109225	130355	B134705	19	40,81	12,10	33,44	25,01	19,64
4120548	130945	B134705	19	40,81	12,10	33,44	25,01	19,64
4142225	130360	B135710	19	47,50	15,06	36,56	28,69	22,70
4202983	130360	B135710	19	47,50	15,06	36,56	28,69	22,70
4255494	130360	B135710	19	47,50	15,06	36,56	28,69	22,70
4262294	130355	B134705	19	40,81	12,10	33,44	25,01	19,64
4262329	130945	B134705	19	40,81	12,10	33,44	25,01	19,64
4287975	130945	B134705	19	40,81	12,10	33,44	25,01	19,64
9928450	130386	B139773	33	68,33	17,36	46,12	38,55	29,81
9933236	130386	B139773	33	68,33	17,36	46,12	38,55	29,81
9936042	131668	B134593	23	44,23	13,90	36,03	29,50	20,19
9941307	133567	B139779	21	44,16	11,44	34,58	25,44	18,76
9956550	131670	B134592	23	67,92	17,45	45,74	28,60	20,68
FORD								
F4XY11005A	231471	B139877	25	46,22	11,90	30,10	32,66	22,83
XC1U11005AA	230739	B233070	17	43,96	12,36	30,10	34,85	25,34



Commutator Details

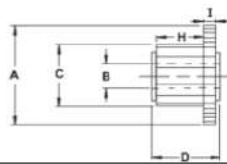
Armature O.E. No.	Armature Cargo No.	Commutator Bars No.	A	B	C	D	H	I	
HITACHI									
2114-11003	135845	B134603	33	58,13	16,38	40,95	32,82	18,24	5,42
2114-11006	137337	B134603	33	58,13	16,38	40,95	32,82	18,24	5,42
2114-21002	135827	B134603	33	58,13	16,38	40,95	32,82	18,24	5,42
2114-21008	135653	B137341	29	47,13	16,35	33,79	29,89	15,89	4,98
2114-21100	138701	B138979	29	46,21	12,01	31,13	25,00	16,87	4,44
2114-21101	134070	B134603	33	58,13	16,38	40,95	32,82	18,24	5,42
2114-31008	135923	B134603	33	58,13	16,38	40,95	32,82	18,24	5,42
2114-31109	138701	B138979	29	46,21	12,01	31,13	25,00	16,87	4,44
2114-41001	135724	B134603	33	58,13	16,38	40,95	32,82	18,24	5,42
2114-51005	138959	B137341	29	47,13	16,35	33,79	29,89	15,89	4,98
2114-51008	134070	B134603	33	58,13	16,38	40,95	32,82	18,24	5,42
2114-51108	134662	B134603	33	58,13	16,38	40,95	32,82	18,24	5,42
2114-61103	135649	B134603	33	58,13	16,38	40,95	32,82	18,24	5,42
2114-71001	138959	B137341	29	47,13	16,35	33,79	29,89	15,89	4,98
2114-71008	134662	B134603	33	58,13	16,38	40,95	32,82	18,24	5,42
2114-71101	137324	B139120	25	45,02	16,50	33,55	30,85	15,95	4,56
2114-71103	133849	B134603	33	58,13	16,38	40,95	32,82	18,24	5,42
2114-71105	137304	B139120	25	45,02	16,50	33,55	30,85	15,95	4,56
2114-81001	135093	B137341	29	47,13	16,35	33,79	29,89	15,89	4,98
2114-91001	133031	B134603	33	58,13	16,38	40,95	32,82	18,24	5,42
2120-7100	132018	B233490	29	67,28	16,97	46,16	30,75	21,48	6,20
2130-1101	132456	B139771	27	50,16	16,32	37,20	36,40	27,30	4,29
2130-21003	132798	B139771	27	50,16	16,32	37,20	36,40	27,30	4,29
2130-31002	132456	B139771	27	50,16	16,32	37,20	36,40	27,30	4,29
2130-41003	136248	B139771	27	50,16	16,32	37,20	36,40	27,30	4,29
2130-41004	132798	B139771	27	50,16	16,32	37,20	36,40	27,30	4,29
2130-4102	132798	B139771	27	50,16	16,32	37,20	36,40	27,30	4,29
2130-51002	132798	B139771	27	50,16	16,32	37,20	36,40	27,30	4,29
2130-51003	132798	B139771	27	50,16	16,32	37,20	36,40	27,30	4,29
2130-61003	132798	B139771	27	50,16	16,32	37,20	36,40	27,30	4,29
2130-91002	132798	B139771	27	50,16	16,32	37,20	36,40	27,30	4,29
2240-2100	138830	B139771	27	50,16	16,32	37,20	36,40	27,30	4,29
2250-21001	133056	B233753	25	57,12	14,09	38,67	39,43	31,85	5,41
2250-71002	133056	B233753	25	57,12	14,09	38,67	39,43	31,85	5,41
2270-3100	133056	B233753	25	57,12	14,09	38,67	39,43	31,85	5,41
ISKRA									
16.360.043	135809	B134568	33	51,09	15,10	36,16	27,80	22,37	4,97
16.360.068	130320	B134577	25	77,11	22,05	50,79	56,29	41,75	7,62
-	-	B134578	29	76,99	22,10	51,03	56,07	42,14	7,16
16.360.322	130119	B134573	33	65,52	19,05	46,11	43,62	30,22	6,93
16.360.324	131309	B134573	33	65,52	19,05	46,11	43,62	30,22	6,93
16.360.325	131075	B134580	21	68,01	17,47	46,13	41,06	29,32	5,85
16.360.326	130319	B134573	33	65,52	19,05	46,11	43,62	30,22	6,93
16.360.333	130120	B134578	29	76,99	22,10	51,03	56,07	42,14	7,16
16.360.347	138261	B139773	33	68,33	17,36	46,12	38,55	29,81	5,25
16.360.539	131311	B134578	29	76,99	22,10	51,03	56,07	42,14	7,16
16.360.576	131116	B139122	27	64,11	19,02	45,62	45,02	30,94	6,92



Commutator Details

Armature O.E. No.	Armature Cargo No.	Commutator Bars No.	A	B	C	D	H	I	
LUCAS									
26253757	133368	B138688	21	78,85	15,96	42,77	38,30	25,05	6,93
26255073	135869	B138689	23	69,00	16,99	41,95	32,50	26,28	6,40
271737	130195	B138689	23	69,00	16,99	41,95	32,50	26,28	6,40
272334	130195	B138689	23	69,00	16,99	41,95	32,50	26,28	6,40
54243590	130200	B138688	21	78,85	15,96	42,77	38,30	25,05	6,93
54243592	130878	B138688	21	78,85	15,96	42,77	38,30	25,05	6,93
54245090	131652	B136812	29	58,47	12,57		16,60		4,97
54246259	131652	B136812	29	58,47	12,57		16,60		4,97
54246290	131652	B136812	29	58,47	12,57		16,60		4,97
54247379	130202	B138689	23	69,00	16,99	41,95	32,50	26,28	6,40
54248609	135869	B138689	23	69,00	16,99	41,95	32,50	26,28	6,40
54251052	131654	B138689	23	69,00	16,99	41,95	32,50	26,28	6,40
54251818	130205	B138689	23	69,00	16,99	41,95	32,50	26,28	6,40
54255952	131655	B138689	23	69,00	16,99	41,95	32,50	26,28	6,40
54267043	131650	B136812	29	58,47	12,57		16,60		4,97
54267052	131651	B136813	29	53,30	13,23		18,65		7,31
54268382	133368	B138688	21	78,85	15,96	42,77	38,30	25,05	6,93
54268555	132401	B138688	21	78,85	15,96	42,77	38,30	25,05	6,93
54269554	137363	B138688	21	78,85	15,96	42,77	38,30	25,05	6,93
54269737	137004	B136812	29	58,47	12,57		16,60		4,97
54290749	133303	B139121	21	40,98	12,44	30,46	27,86	18,34	5,27
54290870	135815	B232972	21	41,06	12,45	30,57	34,95	18,70	4,81
54291945	133305	B139121	21	40,98	12,44	30,46	27,86	18,34	5,27
54292178	137530	B139121	21	40,98	12,44	30,46	27,86	18,34	5,27
54292192	136963	B139121	21	40,98	12,44	30,46	27,86	18,34	5,27
54292308	133304	B139121	21	40,98	12,44	30,46	27,86	18,34	5,27
54292376	133368	B138688	21	78,85	15,96	42,77	38,30	25,05	6,93
54292574	136319	B139121	21	40,98	12,44	30,46	27,86	18,34	5,27
54292575	136319	B139121	21	40,98	12,44	30,46	27,86	18,34	5,27
54292953	130202	B138689	23	69,00	16,99	41,95	32,50	26,28	6,40
54294409	134365	B138976	21	41,60	10,50	29,50	31,35	20,52	5,34
54294543	134365	B138976	21	41,60	10,50	29,50	31,35	20,52	5,34
54295331	138443	B139779	21	44,16	11,44	34,58	25,44	18,76	4,02
TGB109	131651	B136813	29	53,30	13,23		18,65		7,31
TGB110	131650	B136812	29	58,47	12,57		16,60		4,97
TGB117	137004	B136812	29	58,47	12,57		16,60		4,97
TGB122	133305	B139121	21	40,98	12,44	30,46	27,86	18,34	5,27
TGB124	133303	B139121	21	40,98	12,44	30,46	27,86	18,34	5,27
TGB125	135815	B232972	21	41,06	12,45	30,57	34,95	18,70	4,81
TGB126	133304	B139121	21	40,98	12,44	30,46	27,86	18,34	5,27
TGB127	137530	B139121	21	40,98	12,44	30,46	27,86	18,34	5,27
TGB128	136963	B139121	21	40,98	12,44	30,46	27,86	18,34	5,27
TGB130	136319	B139121	21	40,98	12,44	30,46	27,86	18,34	5,27
THB101	131652	B136812	29	58,47	12,57		16,60		4,97
TIB107	135869	B138689	23	69,00	16,99	41,95	32,50	26,28	6,40
TIB108	130202	B138689	23	69,00	16,99	41,95	32,50	26,28	6,40
TIB112	131654	B138689	23	69,00	16,99	41,95	32,50	26,28	6,40
TIB113	130205	B138689	23	69,00	16,99	41,95	32,50	26,28	6,40
TIB114	131655	B138689	23	69,00	16,99	41,95	32,50	26,28	6,40
TIB115	130195	B138689	23	69,00	16,99	41,95	32,50	26,28	6,40
TJB103	130200	B138688	21	78,85	15,96	42,77	38,30	25,05	6,93
TJB104	130878	B138688	21	78,85	15,96	42,77	38,30	25,05	6,93
TJB111	133368	B138688	21	78,85	15,96	42,77	38,30	25,05	6,93
TJB112	132401	B138688	21	78,85	15,96	42,77	38,30	25,05	6,93
TJB113	133368	B138688	21	78,85	15,96	42,77	38,30	25,05	6,93
TJB114	133368	B138688	21	78,85	15,96	42,77	38,30	25,05	6,93
TJB115	137363	B138688	21	78,85	15,96	42,77	38,30	25,05	6,93
MAGNETI MARELLI									
72162601	133955	B139773	33	68,33	17,36	46,12	38,55	29,81	5,25
72163201	131470	B139773	33	68,33	17,36	46,12	38,55	29,81	5,25
72163701	131472	B134592	23	67,92	17,45	45,74	28,60	20,68	5,91
72382301	131670	B134592	23	67,92	17,45	45,74	28,60	20,68	5,91
72386601	132951	B134573	33	65,52	19,05	46,11	43,62	30,22	6,93
72386801	130386	B139773	33	68,33	17,36	46,12	38,55	29,81	5,25
72386803	130386	B139773	33	68,33	17,36	46,12	38,55	29,81	5,25
72387301	130218	B139876	33	69,13	17,44	45,14	29,11	19,75	6,24

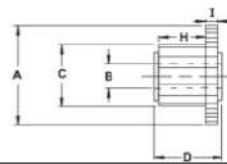
O.E.M. names and numbers are used for reference purposes only. O.E (Original Equipment)



Commutator Details

Armature O.E. No.	Armature Cargo No.	Commutator Bars No.	A	B	C	D	H	I	
72391702	230747	B139773	33	68,33	17,36	46,12	38,55	29,81	5,25
74861761	130360	B135710	19	47,50	15,06	36,56	28,69	22,70	4,96
74868551	130355	B134705	19	40,81	12,10	33,44	25,01	19,64	4,42
74869671	130945	B134705	19	40,81	12,10	33,44	25,01	19,64	4,42
74870031	130945	B134705	19	40,81	12,10	33,44	25,01	19,64	4,42
74880991	131668	B134593	23	44,23	13,90	36,03	29,50	20,19	4,39
74885041	134653	B134593	23	44,23	13,90	36,03	29,50	20,19	4,39
74886461	133224	B135710	19	47,50	15,06	36,56	28,69	22,70	4,96
74886931	131132	B134705	19	40,81	12,10	33,44	25,01	19,64	4,42
74888921	132849	B134570	27	56,51	15,19	35,52	30,28	21,06	5,89
74891011	132619	B135710	19	47,50	15,06	36,56	28,69	22,70	4,96
74892151	131132	B134705	19	40,81	12,10	33,44	25,01	19,64	4,42
74893711	132615	B134596	23	48,97	12,97	37,73	35,29	18,51	4,87
74894221	132817	B232975	25	48,95	10,52	32,44	31,90	25,43	5,55
74899021	132817	B232975	25	48,95	10,52	32,44	31,90	25,43	5,55
83220031	133567	B139779	21	44,16	11,44	34,58	25,44	18,76	4,02
83220271	134365	B138976	21	41,60	10,50	29,50	31,35	20,52	5,34
83222921	134365	B138976	21	41,60	10,50	29,50	31,35	20,52	5,34
83225127	135620	B139779	21	44,16	11,44	34,58	25,44	18,76	4,02
83225372	133567	B139779	21	44,16	11,44	34,58	25,44	18,76	4,02
83225727	135620	B139779	21	44,16	11,44	34,58	25,44	18,76	4,02
83225758	138443	B139779	21	44,16	11,44	34,58	25,44	18,76	4,02
83225937	234093	B139121	21	40,98	12,44	30,46	27,86	18,34	5,27
83226536	135620	B139779	21	44,16	11,44	34,58	25,44	18,76	4,02
83226811	135620	B139779	21	44,16	11,44	34,58	25,44	18,76	4,02
86226811	135620	B139779	21	44,16	11,44	34,58	25,44	18,76	4,02
MAGNETON									
443930154860	132383	B134593	23	44,23	13,90	36,03	29,50	20,19	4,39
443937150600	132383	B134593	23	44,23	13,90	36,03	29,50	20,19	4,39
7150600	132383	B134593	23	44,23	13,90	36,03	29,50	20,19	4,39
MANDO MELROE									
36150-11150	134736	B136031	21	42,42	15,53	32,62	27,96	18,45	5,09
36150-32500	136334	B138979	29	46,21	12,01	31,13	25,00	16,87	4,44
36150-32510	136334	B138979	29	46,21	12,01	31,13	25,00	16,87	4,44
MITSUBISHI									
M106T01871	134071	B139776	21	42,11	9,95	32,58	24,94	16,72	4,89
M106T01970	134737	B138975	21	42,58	14,38	32,20	25,95	17,54	4,98
M106T03271	135118	B138978	31	55,62	15,24	38,61	26,38	18,75	3,02
M106T03971	135118	B138978	31	55,62	15,24	38,61	26,38	18,75	3,02
M106T04771	138417	B139775	21	41,68	15,64	32,98	27,77	18,20	6,00
M106T05770	134736	B136031	21	42,42	15,53	32,62	27,96	18,45	5,09
M106T05771	134736	B136031	21	42,42	15,53	32,62	27,96	18,45	5,09
M106T07070	135928	B139775	21	41,68	15,64	32,98	27,77	18,20	6,00
M106T07472	134736	B136031	21	42,42	15,53	32,62	27,96	18,45	5,09
M106T07771	134736	B136031	21	42,42	15,53	32,62	27,96	18,45	5,09
M106T08371	138417	B139775	21	41,68	15,64	32,98	27,77	18,20	6,00
M106T08671	135832	B139878	29	46,57	12,06	31,45	25,00	18,35	5,46
M106T16571	132762	B137340	33	52,87	15,53	40,52	25,48	17,31	5,88
M106T16571	132762	B137340	33	52,87	15,53	40,52	25,48	17,31	5,88
M106T16571	132762	B137340	33	52,87	15,53	40,52	25,48	17,31	5,88
M106T16571	132762	B137340	33	52,87	15,53	40,52	25,48	17,31	5,88
M106T16571	132762	B137340	33	52,87	15,53	40,52	25,48	17,31	5,88
M106T17271	132762	B137340	33	52,87	15,53	40,52	25,48	17,31	5,88
M106T17271	132762	B137340	33	52,87	15,53	40,52	25,48	17,31	5,88
M106T17271	132762	B137340	33	52,87	15,53	40,52	25,48	17,31	5,88
M106T17271	132762	B137340	33	52,87	15,53	40,52	25,48	17,31	5,88
M106T17271	132762	B137340	33	52,87	15,53	40,52	25,48	17,31	5,88
M106T17271	132762	B137340	33	52,87	15,53	40,52	25,48	17,31	5,88
M106T17371	132762	B137340	33	52,87	15,53	40,52	25,48	17,31	5,88
M106T17371	132762	B137340	33	52,87	15,53	40,52	25,48	17,31	5,88
M106T17371	132762	B137340	33	52,87	15,53	40,52	25,48	17,31	5,88
M106T17371	132762	B137340	33	52,87	15,53	40,52	25,48	17,31	5,88
M106T17371	132762	B137340	33	52,87	15,53	40,52	25,48	17,31	5,88
M106T19771	135118	B138978	31	55,62	15,24	38,61	26,38	18,75	3,02
M106T50271	134736	B136031	21	42,42	15,53	32,62	27,96	18,45	5,09
M106T52371	135928	B139775	21	41,68	15,64	32,98	27,77	18,20	6,00

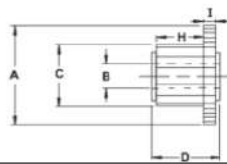
O.E.M. names and numbers are used for reference purposes only. O.E (Original Equipment)



Commutator Details

Armature O.E. No.	Armature Cargo No.	Commutator Bars No.	A	B	C	D	H	I
MITSUBISHI continued								
M106T52571	134736	B136031	21	42,42	15,53	32,62	27,96	18,45
M106T57671	139398	B139878	29	46,57	12,06	31,45	25,00	18,35
M106X01171	132484	B139776	21	42,11	9,95	32,58	24,94	16,72
M106X01271	134071	B139776	21	42,11	9,95	32,58	24,94	16,72
M106X01871	134071	B139776	21	42,11	9,95	32,58	24,94	16,72
M106X02271	132486	B139774	25	47,03	9,89	33,26	31,66	22,61
M106X04672	137923	B232973	21	39,06	10,00	28,59	26,90	19,11
M106X06971	136334	B138979	29	46,21	12,01	31,13	25,00	16,87
M106X07271	231471	B139877	25	46,22	11,90	30,10	32,66	22,83
M106X08571	132484	B139776	21	42,11	9,95	32,58	24,94	16,72
M106X08671	135832	B139878	29	46,57	12,06	31,45	25,00	18,35
M106X09971	139401	B139878	29	46,57	12,06	31,45	25,00	18,35
M106X29371	133034	B139774	25	47,03	9,89	33,26	31,66	22,61
M106X29871	132486	B139774	25	47,03	9,89	33,26	31,66	22,61
M106X40671	132487	B233755	23	46,54	10,03	21,35	35,96	29,18
M106X41671	132486	B139774	25	47,03	9,89	33,26	31,66	22,61
M106X41672	132486	B139774	25	47,03	9,89	33,26	31,66	22,61
M106X41673	132486	B139774	25	47,03	9,89	33,26	31,66	22,61
M106X41674	132486	B139774	25	47,03	9,89	33,26	31,66	22,61
M106X50171	136334	B138979	29	46,21	12,01	31,13	25,00	16,87
M106X50271	134736	B136031	21	42,42	15,53	32,62	27,96	18,45
M106X50471	136334	B138979	29	46,21	12,01	31,13	25,00	16,87
M106X50571	231471	B139877	25	46,22	11,90	30,10	32,66	22,83
M106X50671	132487	B233755	23	46,54	10,03	21,35	35,96	29,18
M106X50871	134736	B136031	21	42,42	15,53	32,62	27,96	18,45
M106X51471	137923	B232973	21	39,06	10,00	28,59	26,90	19,11
M106X51671	134737	B138975	21	42,58	14,38	32,20	25,95	17,54
M106X52171	135832	B139878	29	46,57	12,06	31,45	25,00	18,35
M106X52271	138417	B139775	21	41,68	15,64	32,98	27,77	18,20
M106X52371	135928	B139775	21	41,68	15,64	32,98	27,77	18,20
M106X52471	136179	B136031	21	42,42	15,53	32,62	27,96	18,45
M106X52571	134736	B136031	21	42,42	15,53	32,62	27,96	18,45
M106X52771	134736	B136031	21	42,42	15,53	32,62	27,96	18,45
M106X52871	134736	B136031	21	42,42	15,53	32,62	27,96	18,45
M106X52971	132762	B137340	33	52,87	15,53	40,52	25,48	17,31
M106X52971	132762	B137340	33	52,87	15,53	40,52	25,48	17,31
M106X52971	132762	B137340	33	52,87	15,53	40,52	25,48	17,31
M106X52971	132762	B137340	33	52,87	15,53	40,52	25,48	17,31
M106X53171	132484	B139776	21	42,11	9,95	32,58	24,94	16,72
M106X53271	134071	B139776	21	42,11	9,95	32,58	24,94	16,72
M106X53571	132484	B139776	21	42,11	9,95	32,58	24,94	16,72
M106X53871	139400	B139775	21	41,68	15,64	32,98	27,77	18,20
M106X53971	138417	B139775	21	41,68	15,64	32,98	27,77	18,20
M106X54071	138417	B139775	21	41,68	15,64	32,98	27,77	18,20
M106X54271	136613	B139877	25	46,22	11,90	30,10	32,66	22,83
M106X54971	132484	B139776	21	42,11	9,95	32,58	24,94	16,72
M106X55071	134071	B139776	21	42,11	9,95	32,58	24,94	16,72
M106X55171	139397	B139775	21	41,68	15,64	32,98	27,77	18,20
M106X55172	139397	B139775	21	41,68	15,64	32,98	27,77	18,20
M106X55571	139400	B139775	21	41,68	15,64	32,98	27,77	18,20
M106X57171	132484	B139776	21	42,11	9,95	32,58	24,94	16,72
M106X57271	134071	B139776	21	42,11	9,95	32,58	24,94	16,72
M106X57471	136613	B139877	25	46,22	11,90	30,10	32,66	22,83
M106X57671	139398	B139878	29	46,57	12,06	31,45	25,00	18,35
M106X58171	231471	B139877	25	46,22	11,90	30,10	32,66	22,83
M106X58571	135832	B139878	29	46,57	12,06	31,45	25,00	18,35
M106X58671	230499	B139878	29	46,57	12,06	31,45	25,00	18,35
M106X58771	139398	B139878	29	46,57	12,06	31,45	25,00	18,35
M106X59171	136613	B139877	25	46,22	11,90	30,10	32,66	22,83
M106X74781	136613	B139877	25	46,22	11,90	30,10	32,66	22,83
M806X06971	136334	B138979	29	46,21	12,01	31,13	25,00	16,87
MD602250	132762	B137340	33	52,87	15,53	40,52	25,48	17,31
MD602250	132762	B137340	33	52,87	15,53	40,52	25,48	17,31
MD602250	132762	B137340	33	52,87	15,53	40,52	25,48	17,31
MD602250	132762	B137340	33	52,87	15,53	40,52	25,48	17,31
MD604912	135824	B139772	21	38,61	13,68	28,63	30,55	18,11
MD607284	135118	B138978	31	55,62	15,24	38,61	26,38	18,75

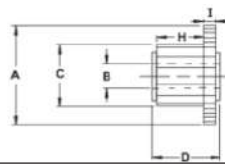
O.E.M. names and numbers are used for reference purposes only. O.E (Original Equipment)



Commutator Details

Armature O.E. No.	Armature Cargo No.	Commutator Bars No.	A	B	C	D	H	I	
MD607413	134071	B139776	21	42,11	9,95	32,58	24,94	16,72	4,89
MD607552	134737	B138975	21	42,58	14,38	32,20	25,95	17,54	4,98
MD607636	132486	B139774	25	47,03	9,89	33,26	31,66	22,61	4,27
MD607924	134736	B136031	21	42,42	15,53	32,62	27,96	18,45	5,09
MD611204	136334	B138979	29	46,21	12,01	31,13	25,00	16,87	4,44
MD618369	132486	B139774	25	47,03	9,89	33,26	31,66	22,61	4,27
MD618443	134736	B136031	21	42,42	15,53	32,62	27,96	18,45	5,09
MD618451	136334	B138979	29	46,21	12,01	31,13	25,00	16,87	4,44
MD618536	139401	B139878	29	46,57	12,06	31,45	25,00	18,35	5,46
MD619164	139398	B139878	29	46,57	12,06	31,45	25,00	18,35	5,46
NIPPONDENSO									
021200-2120	132796	B139777	21	40,14	11,86	30,15	31,71	21,33	5,68
028200-0820	134946	B138977	33	56,07	15,47	33,04	26,97	18,77	3,42
028200-0900	135825	B138977	33	56,07	15,47	33,04	26,97	18,77	3,42
028200-0910	138383	B138977	33	56,07	15,47	33,04	26,97	18,77	3,42
028200-0920	135825	B138977	33	56,07	15,47	33,04	26,97	18,77	3,42
028200-1022	135824	B139772	21	38,61	13,68	28,63	30,55	18,11	4,49
028200-1070	134946	B138977	33	56,07	15,47	33,04	26,97	18,77	3,42
028200-1151	138757	B138977	33	56,07	15,47	33,04	26,97	18,77	3,42
028200-1313	134368	B139777	21	40,14	11,86	30,15	31,71	21,33	5,68
028200-1511	134368	B139777	21	40,14	11,86	30,15	31,71	21,33	5,68
028200-1531	132796	B139777	21	40,14	11,86	30,15	31,71	21,33	5,68
028200-1590	132553	B138437	23	47,18	14,06	35,57	43,02	30,80	5,88
028200-1780	132869	B138621	23	48,48	13,99	38,44	43,01	31,16	5,89
028200-1820	133389	B139772	21	38,61	13,68	28,63	30,55	18,11	4,49
028200-1820	133389	B139772	21	38,61	13,68	28,63	30,55	18,11	4,49
028200-1900	132869	B138621	23	48,48	13,99	38,44	43,01	31,16	5,89
028200-2010	135824	B139772	21	38,61	13,68	28,63	30,55	18,11	4,49
028200-2120	132796	B139777	21	40,14	11,86	30,15	31,71	21,33	5,68
028200-2140	134369	B233491	23	45,06	13,92	36,00	42,23	32,55	5,93
028200-2230	132553	B138437	23	47,18	14,06	35,57	43,02	30,80	5,88
028200-2320	134370	B139777	21	40,14	11,86	30,15	31,71	21,33	5,68
028200-2690	135626	B139772	21	38,61	13,68	28,63	30,55	18,11	4,49
028200-4540	132796	B139777	21	40,14	11,86	30,15	31,71	21,33	5,68
028200-5210	136862	B233754	21	38,94	12,25	28,56	24,92	14,79	3,85
028200-5370	134370	B139777	21	40,14	11,86	30,15	31,71	21,33	5,68
028200-7430	134369	B233491	23	45,06	13,92	36,00	42,23	32,55	5,93
PARIS RHONE / VALEO									
074519	134470	B134597	25	70,16	16,95	45,90	31,89	23,30	6,25
074653	136427	B134599	19	69,64	16,68	46,49	38,83	29,61	7,63
074771	134935	B134599	19	69,64	16,68	46,49	38,83	29,61	7,63
075371	137291	B134599	19	69,64	16,68	46,49	38,83	29,61	7,63
075515	133212	B134584	29	49,84	14,95	37,53	27,77	19,28	6,81
075658	130238	B134584	29	49,84	14,95	37,53	27,77	19,28	6,81
077771	130241	B134584	29	49,84	14,95	37,53	27,77	19,28	6,81
078253	133848	B134584	29	49,84	14,95	37,53	27,77	19,28	6,81
092010	233503	B134584	29	49,84	14,95	37,53	27,77	19,28	6,81
093952	133959	B134584	29	49,84	14,95	37,53	27,77	19,28	6,81
094537	133212	B134584	29	49,84	14,95	37,53	27,77	19,28	6,81
095955	131020	B134597	25	70,16	16,95	45,90	31,89	23,30	6,25
095965	133214	B134597	25	70,16	16,95	45,90	31,89	23,30	6,25
095972	136881	B134599	19	69,64	16,68	46,49	38,83	29,61	7,63
095981	133136	B134597	25	70,16	16,95	45,90	31,89	23,30	6,25
098356	132173	B134599	19	69,64	16,68	46,49	38,83	29,61	7,63
098557	134648	B134597	25	70,16	16,95	45,90	31,89	23,30	6,25
099741	131190	B136814	21	73,85	16,10	42,95	32,25	24,88	7,00
-	-	B137407	21	63,18	15,79	43,07	33,07	23,02	6,62
100094	132148	B134599	19	69,64	16,68	46,49	38,83	29,61	7,63
101290	132644	B134594	19	53,04	15,60	14,76	14,76	6,73	6,73
101581	131813	B134594	19	53,04	15,60	14,76	14,76	6,73	6,73
101649	132199	B134597	25	70,16	16,95	45,90	31,89	23,30	6,25
101923	132618	B134594	19	53,04	15,60	14,76	14,76	6,73	6,73
102380	131813	B134594	19	53,04	15,60	14,76	14,76	6,73	6,73
102851	133215	B134594	19	53,04	15,60	14,76	14,76	6,73	6,73
104147	132107	B134595	25	61,11	15,91	41,64	34,22	18,05	5,87

O.E.M. names and numbers are used for reference purposes only. O.E (Original Equipment)



Commutator Details

Armature O.E. No.	Armature CargoNo.	Commutator Bars No.	A	B	C	D	H	I
PARIS RHONE / VALEO continued								
104424	132157	B134597	25	70,16	16,95	45,90	31,89	23,30
105294	132109	B134597	25	70,16	16,95	45,90	31,89	23,30
182049	132027	B232974	19	54,42	10,03	34,45	37,36	24,56
182053	132028	B232974	19	54,42	10,03	34,45	37,36	24,56
182175	132027	B232974	19	54,42	10,03	34,45	37,36	24,56
182227	132107	B134595	25	61,11	15,91	41,64	34,22	18,05
192053	132028	B232974	19	54,42	10,03	34,45	37,36	24,56
588368	231333	B134599	19	69,64	16,68	46,49	38,83	29,61
594028	132028	B232974	19	54,42	10,03	34,45	37,36	24,56
594148	132027	B232974	19	54,42	10,03	34,45	37,36	24,56
594219	233697	B234458	27	75,00	21,95	55,30	43,30	34,26
594526	134513	B139780	23	44,47	8,29		13,34	3,64
594528	230250	B139780	23	44,47	8,29		13,34	3,64
594529	139593	B139780	23	44,47	8,29		13,34	3,64
NE029	130238	B134584	29	49,84	14,95	37,53	27,77	19,28
NE034	130241	B134584	29	49,84	14,95	37,53	27,77	19,28
NE037	133212	B134584	29	49,84	14,95	37,53	27,77	19,28
NE041	131020	B134597	25	70,16	16,95	45,90	31,89	23,30
NE042	133136	B134597	25	70,16	16,95	45,90	31,89	23,30
NE046	132173	B134599	19	69,64	16,68	46,49	38,83	29,61
NE050	131190	B136814	21	73,85	16,10	42,95	32,25	24,88
-	-	B137407	21	63,18	15,79	43,07	33,07	23,02
NE051	132148	B134599	19	69,64	16,68	46,49	38,83	29,61
NE052	132644	B134594	19	53,04	15,60		14,76	6,73
NE053	131813	B134594	19	53,04	15,60		14,76	6,73
NE054	132199	B134597	25	70,16	16,95	45,90	31,89	23,30
NE057	133215	B134594	19	53,04	15,60		14,76	6,73
NE274	133218	B134583	29	52,24	12,85	37,42	27,78	19,95
-	-	B135709	29	50,95	11,70	33,98	25,46	19,84
NE278	132160	B134598	23	66,06	16,86	41,97	31,02	24,16
NE288	131094	B134583	29	52,24	12,85	37,42	27,78	19,95
-	-	B135709	29	50,95	11,70	33,98	25,46	19,84
NE295	133221	B134586	29	57,59	12,3		21,92	6,21
NE296	130949	B134587	23	57,48	13,07		21,55	8,13
NE456	133735	B134587	23	57,48	13,07		21,55	8,13
NE500	133214	B134597	25	70,16	16,95	45,90	31,89	23,30
NE936	233697	B234458	27	75,00	21,95	55,30	43,30	34,26

Contact US



Pakistan

Headquarter Address : Malik & Company Chaudhary Park, Rashid Road, Lahore, Pakistan

+92 333 432 9867 , +92 342 772 3216

info@malikcompany.com